

Checkweigher WK+

Fully automatic, high-precision weighing and sorting of small products



German Quality

! Benefits

- Precise, fast measurement results thanks to static weighing and EMC technology
- Space-saving integration and easy operation
- Resistant to disruptive influences such as
 - drafts
 - temperature fluctuations
 - electrostatic charge

The checkweigher WK+ boasts fully-automatic, interruption-free weighing and sorting in a stop-and-go process for reliable and fast weight and integrity checking.

For reliable quality checking of small packaged items

- ① The reliable **EMC technology** and the checkweigher's **static weighing process** ensure precision and throughput.
- ① The checkweigher WK+ requires **little space** and is also easily retrofitted.
- ① Straightforward, **automatic product teach-in** ensures ease of use for the user.
- ① The checkweigher WK+ is impervious to drafts and temperature fluctuations. It is also available **with an ioniser** on request to minimise electrostatic charge.

The right solution for all of these applications:



Weighing



Classification

Technical specifications

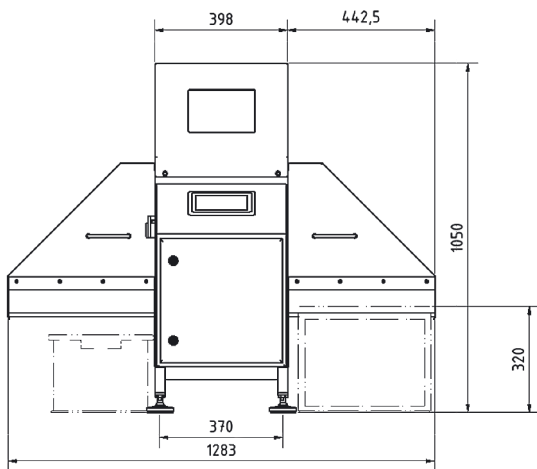
Checkweigher WK+	
Characteristic	Specifications
Weighing system	WS 1 kg
Gross weighing range [g]	Up to 1,000
Throughput [items/min.]	Depending on product, permitted imprecision, ambient conditions
Belt length [mm]	330
Belt width [mm]	300
Drives	Maintenance-free 24 V EC motor with planetary gear Motor control, short-circuit proof with temperature monitoring
Supply voltage	230 U _{AC} (+10% / -15%); 50 / 60 Hz (L1, N, PE) switchable
Power consumption	Approx. 200 VA
Feed direction	Goods can be fed to the right or left (please specify desired direction when ordering)
Operating height [mm]	410 +/- 20
Floor clearance [mm]	100
Permissible operating temperature range [°C]	0 to +40
Product temperature [°C]	-30 to +80
Conveyor belt temperature range [°C]	-30 to +80/100
Protection class	IP54 (without ionisation rods)
Dimensions [mm]	Length (in feed direction): 1,285 Depth: 865 Height: 1,050 mm ± 25 mm
Checkweigher frame material	Stainless steel 1.4301
Weight	Approx. 75 kg
Airborne noise emission	A-rated sound pressure level emitted < 70 dB(A) The measurement uncertainty is in the range of 2 to 4 dB
Screen	7", IPS, TFT, colour touchscreen



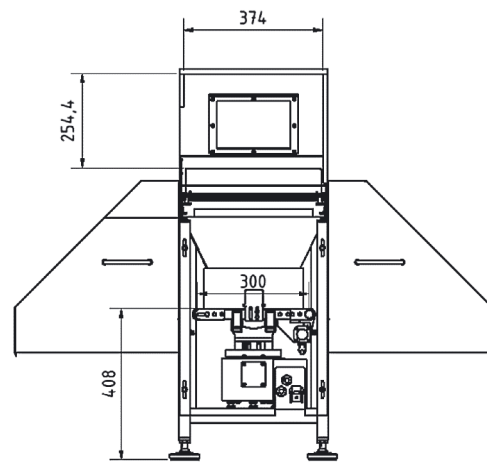
Checkweigher WK+

Technical diagrams

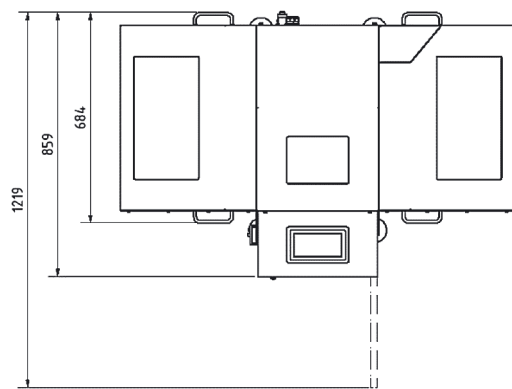
Checkweigher WK+



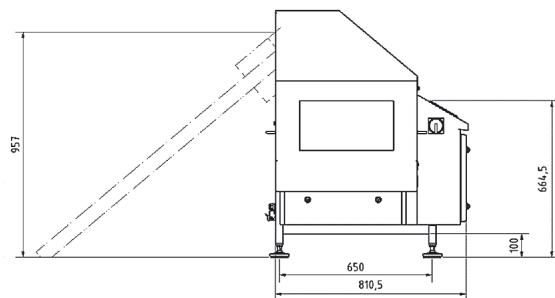
Front view



Front view



Top view



Side view

Equipment

Checkweigher WK+

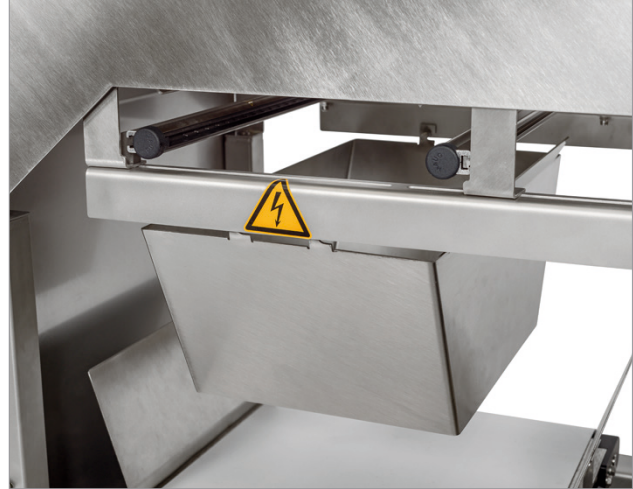
Standard functions / components	
Control electronics	Integrated into a stainless-steel cabinet
Password protection	For parameters
Load cell	Electro-magnetic force compensation
Zero setting	Manual and automatic
Resolution	Adjustable from 10 mg
Digital inputs and outputs	Inputs: Motor fault (ionisation unit fault) Outputs: Left, right, fault output
Operating mode	Static / automatic
Side housing	Suitable for use with Euro containers (600 x 400 x 320 mm)
Optional functions / components	
Ionisation unit	For reducing the products' electrostatic charge

Views

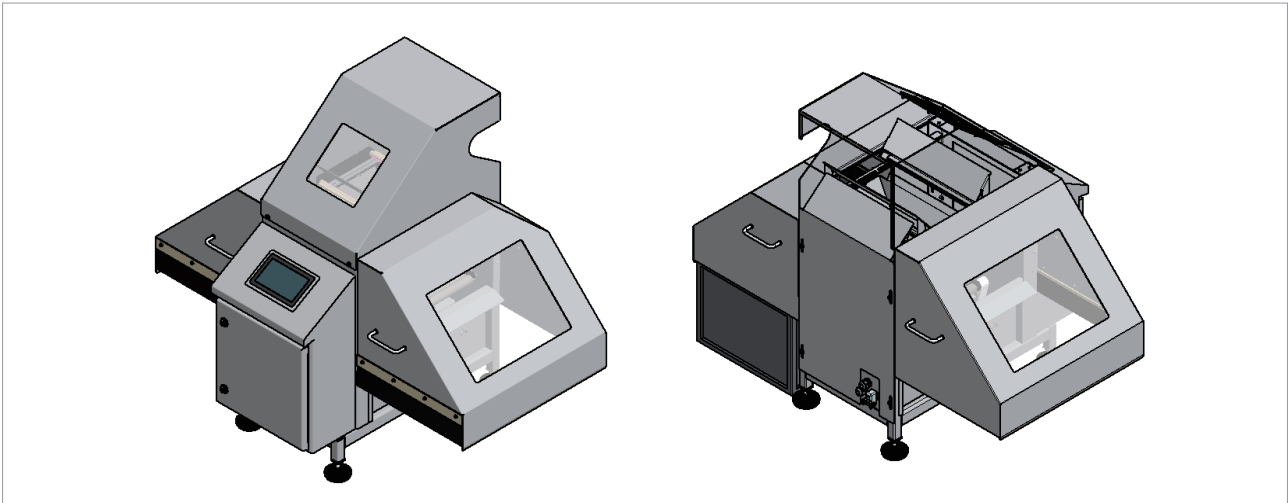
Checkweigher WK+



Detail view



Detail view

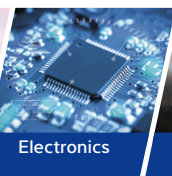


Top view

The products and solutions presented in this data sheet make major contributions in the following sectors:



Chemistry



Electronics



Machinery
(OEM)

The technical data given serves as a product description only and should not be understood as guaranteed properties in the legal sense.

Specifications subject to change without notice.
Rev. 08/2019

Minebea Intec Aachen GmbH & Co. KG
Am Gut Wolf 11
52070 Aachen, Germany
Phone +49.241.1827.0
sales.ac@minebea-intec.com
www.minebea-intec.com