

Weighing platforms MiNexx[®] 3000

The next generation of accurate weighing experience



! Benefits

- Innovative V-Shape design
- Highly configurable
- Superior construction
- Flexible use

The MiNexx[®] weighing platforms convince with their superior design and their high configurability. The innovative V-shape design is a market benchmark and allows an excellent protection of the load cell. The durable and robust construction ensures reliable performances in the most demanding environments. MiNexx[®] weighing platforms offer a multitude of configuration options and can be tailored to suit a wide variety of industrial applications.

Maximum accuracy and efficiency for your applications

- ① The recognizable design of the bench platforms allows an optimal distribution of the acting forces and an excellent protection of the load cell.
- ① Thanks to the extremely low height, the platforms require only little space. In addition the fluid drainage is simplified which enables easy and thorough cleaning.
- ① The MiNexx[®] weighing platforms fit in every production environment. You can choose between a wide range of dimensions, capacities, resolutions and materials. With IP69, the platforms can be used even in the most demanding environmental conditions.
- ① The sophisticated design makes it possible to attach a column at every side of the platform (at two sides for the square shaped platforms). This offers complete flexibility and the freedom to integrate the platforms in every common production process.

Technical specifications

MiNexx® 3000 stainless steel and MiNexx® 3000 painted					
	MiNexx® 3000 stainless steel			MiNexx® 3000 painted	
Name	NP3AS	NYP3AS	NXP3AS	NP3AP	NYP3AP
Ex-approvals	Non Ex	Zone 2/22	Zone 1/21	Non Ex	Zone 2/22
IP protection rating	IP66/IP67 opt. IP68/IP69K	IP 67	IP 67	IP66/IP67	IP 67
Parameters					
Possible combinations	8 load ranges From 1,5kg up to 300kg 6 platform dimensions From 200 x 200 mm up to 650 x 500 mm				
Material	Weighing platform: – Stainless Steel AISI304/1.4301 opt. AISI316/1.4404 electro polished Load plate: – Stainless Steel AISI304/1.4301 opt. AISI316/1.4404 electro polished			Weighing platform: – Galvanized S235JR Load plate: – Stainless Steel AISI304/1.4301	
Humidity	10% - 90% at 40°C				
Maximum use at altitudes above sea level	3,600 m	2,000 m	2,000 m	3,600 m	2,000 m
Weighing system	Strain gauges				
Surface roughness	Weighing platform: – Ra 2 µm with option N9 AISI316/1.4404 0,8 µm Load plate: – Ra 0,8 µm with option N5 AISI316/1.4404 0,4 µm			Weighing platform: – Ra 6,3 µm Load plate: – Ra 0,8 µm	
Resolution (non-verifiable)	Up to 60.000d				
Resolution (verifiable)	Up to 6000e Up to 3x3000e				
EMC	In accordance with EN 61326-1:2013 and RoHS EN IEC 63000:2018				
Length of platform cable	3 m				
Operational temperature range (not verified)	-20°C up to +60°C				
Operational temperature range (verified, accuracy class III)	-10°C up to +40°C				
Storage temperature range	-20°C up to +70°C				
Certificates	OIML certified, ATEX 2/22				
Range of accessories	Roller Conveyor Trestle Column				

Matrix Size/Cap									
		Capacity (kg)							
Dimensions (mm x mm)	Code	1,5	3	6	15	30	60	150	300
200x200	CC	•	•	•					
320x240	DC	•	•	•	•				
300x300	DD		•	•	•	•	•		
400x300	ED					•	•		
500x400	FE					•	•	•	
650x500	GF						•	•	•

Overview weighing ranges, dimensions, resolutions

Weighing Platform NP3AS/NYP3AS - Stainless Steel

Order code	Weighing range in kg	Dimensions in mm	Readability in g							
			Non-verifiable				verifiable, accuracy class III			
			15,000d ¹⁾ -K	30,000d -L	60,000d ²⁾ -P	3000e -FC	2x3000e, MR -GRC	3x3000e, MR -HRC	2x3000e, MI -GIC	6000e ³⁾ -JC
1CC	1.5	200 x 200	0.1	0.05	-	0.5	-	-	-	-
1DC	1.5	320 x 240	0.1	0.05	-	0.5	-	-	-	-
3CC	3	200 x 200	0.2	0.1	0.05*	1	0.5/1	-	0.5/1*	0.5*
3DC	3	320 x 240	0.2	0.1	0.05*	1	0.5/1	-	0.5/1*	0.5*
3DD	3	300 x 300	0.2	0.1	0.05*	1	0.5/1*	-	0.5/1*	0.5*
6CC	6	200 x 200	0.5	0.2	0.1*	2	1/2	0.5/1/2*	1/2*	1*
6DC	6	320 x 240	0.5	0.2	0.1*	2	1/2	0.5/1/2*	1/2*	1*
6DD	6	300 x 300	0.5	0.2	0.1*	2	1/2	-	1/2*	1*
15DC	15	320 x 240	1	0.5	0.2*	5	2/5	1/2/5*	2/5*	2*
15DD	15	300 x 300	1	0.5	0.2*	5	2/5	-	-	2*
30DD	30	300 x 300	2	1	0.5*	10	5/10	2/5/10*	5/10*	5*
30ED	30	400 x 300	2	1	0.5*	10	5/10	2/5/10*	5/10*	5*
30FE	30	500 x 400	2	1	0.5*	10	5/10	2/5/10*	5/10*	5*
60DD	60	300 x 300	5	2	1*	20	10/20	5/10/20*	10/20*	10*
60ED	60	400 x 300	5	2	1*	20	10/20	5/10/20*	10/20*	10*
60FE	60	500 x 400	5	2	1*	20	10/20	5/10/20*	10/20*	10*
60GF	60	650 x 500	5**	2**	1**	20**	10/20**	5/10/20**	10/20**	-
150FE	150	500 x 400	10	5	2*	50	20/50	10/20/50*	-	-
150GF	150	650 x 500	10**	5**	2**	50**	20/50**	10/20/50**	-	-
300GF	300	650 x 500	20**	10**	5**	100**	50/100**	20/50/100**	50/100**	-

* only available as NP3AS IP69

** not available as NYP3AS

1) 12,000d for 6 kg, 60 kg, 600 kg, 6000 kg

2) 75,000d for 1.5 kg, 15 kg, 150 kg, 1500 kg

3) 1.2 kg 12 kg 120 kg 1200 kg instead of 1.5 kg 15 kg 150 kg 1500 kg

Weighing Platform NXP3AS - Stainless Steel

Order code	Weighing range in kg	Dimensions in mm	Readability in g							
			Non-verifiable				verifiable, accuracy class III			
			15,000d ¹⁾ -K	30,000d -L	60,000d ²⁾ -P	3000e -FC	2x3000e, MR -GRC	3x3000e, MR -HRC	2x3000e, MI -GIC	6000e ³⁾ -JC
1CC	1.5	200 x 200	0.1	0.05	-	0.5	-	-	-	-
1DC	1.5	320 x 240	0.1	0.05	-	0.5	-	-	-	-
3CC	3	200 x 200	0.2	0.1	-	1	0.5/1	-	-	-
3DC	3	320 x 240	0.2	0.1	0.05	1	0.5/1	-	0.5/1	-
3DD	3	300 x 300	0.2	0.1	0.05	1	0.5/1	-	0.5/1	-
6CC	6	200 x 200	0.5	0.2	-	2	1/2	-	-	-
6DC	6	320 x 240	0.5	0.2	0.1	2	1/2	0.5/1/2	1/2	-
6DD	6	300 x 300	0.5	0.2	0.1	2	1/2	-	1/2	-
15DC	15	320 x 240	1	0.5	0.2	5	2/5	1/2/5	-	-
15DD	15	300 x 300	1	0.5	-	5	2/5	-	-	-
30DD	30	300 x 300	2	1	0.5	10	5/10	2/5/10	5/10	-
30ED	30	400 x 300	2	1	0.5	10	5/10	2/5/10	5/10	-
30FE	30	500 x 400	2	1	0.5	10	5/10	2/5/10	5/10	-
60DD	60	300 x 300	5	2	1	20	10/20	5/10/20	10/20	-
60ED	60	400 x 300	5	2	1	20	10/20	5/10/20	10/20	-
60FE	60	500 x 400	5	2	1	20	10/20	5/10/20	10/20	-
60GF	60	650 x 500	5	2	1	20	10/20	5/10/20	10/20	-
150FE	150	500 x 400	10	5	2	50	20/50	10/20/50	-	-
150GF	150	650 x 500	10	5	2	50	20/50	10/20/50	-	-
300GF	300	650 x 500	20	10	5	100	50/100	20/50/100	50/100	-

Weighing Platform NP3AP/NYP3AP - Painted

Order code	Weighing range in kg	Dimensions in mm	Readability in g							
			Non-verifiable				verifiable, accuracy class III			
			15,000d ¹⁾ -K	30,000d -L	60,000d ²⁾ -P	3000e -FC	2x3000e, MR -GRC	3x3000e, MR -HRC	2x3000e, MI -GIC	6000e ³⁾ -JC
1CC	1.5	200 x 200	0.1	0.05	-	0.5	-	-	-	-
1DC	1.5	320 x 240	0.1	0.05	-	0.5	-	-	-	-
3CC	3	200 x 200	0.2	0.1	0.05	1	0.5/1	-	0.5/1	0.5
3DC	3	320 x 240	0.2	0.1	0.05	1	0.5/1	-	0.5/1	0.5
3DD	3	300 x 300	0.2	0.1	0.05	1	-	-	-	-
6CC	6	200 x 200	0.5	0.2	0.1	2	1/2	-	1/2	1
6DC	6	320 x 240	0.5	0.2	0.1	2	1/2	-	1/2	1
6DD	6	300 x 300	0.5	0.2	0.1	2	1/2	-	1/2	1
15DC	15	320 x 240	1	0.5	0.2	5	2/5	-	-	2
15DD	15	300 x 300	1	0.5	0.2	5	2/5	-	-	2
30DD	30	300 x 300	2	1	0.5	10	5/10	-	5/10	5
30ED	30	400 x 300	2	1	0.5	10	5/10	-	5/10	5
30FE	30	500 x 400	2	1	0.5	10	5/10	-	5/10	5
60DD	60	300 x 300	5	2	1	20	10/20	-	10/20	10
60ED	60	400 x 300	5	2	1	20	10/20	-	10/20	10
60FE	60	500 x 400	5	2	1	20	10/20	-	10/20	10
60GF	60	650 x 500	5	2	1	20	10/20	-	10/20	10
150FE	150	500 x 400	10	5	2	50	20/50	-	-	20
150GF	150	650 x 500	10	5	2	50	20/50	-	-	20
300GF	300	650 x 500	20	10	5	100	50/100	-	50/100	50

1) 12,000d for 6 kg, 60 kg, 600 kg, 6000 kg

2) 75,000d for 1.5 kg, 15 kg, 150 kg, 1500 kg

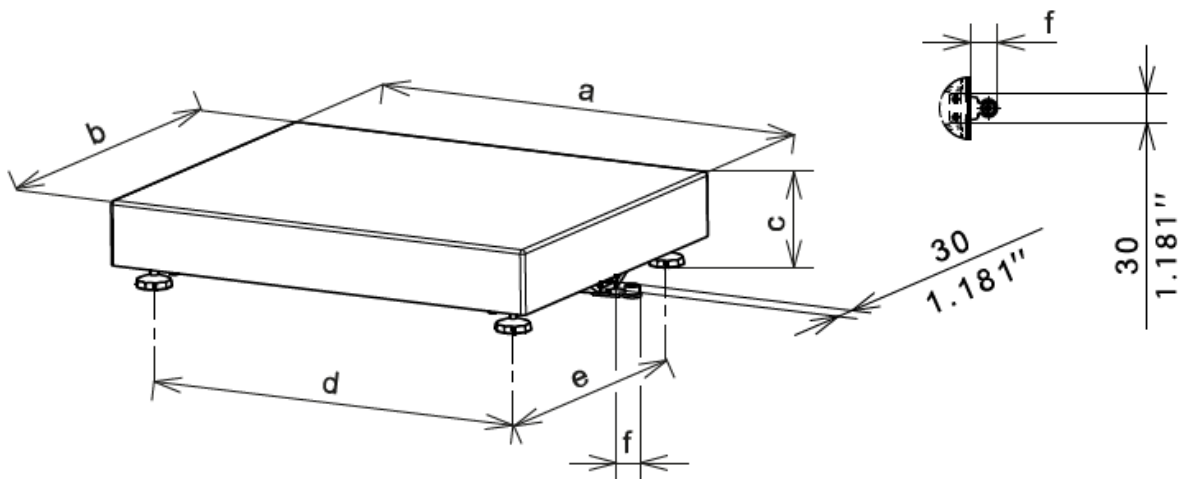
3) 1.2 kg 12 kg 120 kg 1200 kg instead of 1.5 kg 15 kg 150 kg 1500 kg

Maximum additive dead load

Order Code	Weighing range in kg	Dimensions in mm	Max additive dead load	Centre-load bearing capacity	Side-load bearing capacity	Corner-load bearing capacity
CC	1.5	200 x 200	0.3	25	19	13
DC	1.5	320 x 240	0.3	25	19	13
CC	3	200 x 200	0.6	25	19	13
DC	3	320 x 240	0.6	25	19	13
DD	3	300 x 300	0.6	25	19	13
CC	6	200 x 200	1.2	25	19	13
DC	6	320 x 240	1.2	25	19	13
DD	6	300 x 300	1.2	25	19	13
DC	15	320 x 240	3*	60	45	30
DD	15	300 x 300	3*	60	45	30
DD	30	300 x 300	6	60	45	30
ED	30	400 x 300	6	60	45	30
FE	30	500 x 400	6	60	45	30
DD	60	300 x 300	12	175	131	88
ED	60	400 x 300	12	175	131	88
FE	60	500 x 400	12	175	131	88
GF	60	650 x 500	12	175	131	88
FE	150	500 x 400	30	550	413	275
GF	150	650 x 500	30	550	413	275
GF	300	650 x 500	60	600	450	450

* When chosen IP69k option the max. additive dead load is 1.5 kg.
max additive dead load = additional dead load without limiting the weighing range

Technical drawings



	a	b	d	e	f
CC	200	200	135	135	30.5
DC	320	240	255	177	28.5
DD	300	300	234	234	28
ED	400	300	334	230	28
FE	500	400	434	330	28
GF	650	500	562	406	26

c	NP3AP		
	Standard	Different at	
CC	60.5 - 74.5	Option O1 (higher construction)	95.5 - 109.5
DC	60.5 - 72.5	Option O1 (higher construction)	95.5 - 107.5
DD	80.0 - 107.0	≥ 30 kg	94 - 121
ED	94 - 121		
FE	95 - 122		
GF	131.3 - 157		

c	NP3AS / NYP3AS		
	Standard	Different at	
CC	77.5 - 106.5		
DC	77.5 - 104.5	6 kg HRC	80.5 - 107.5
DD	97.0 - 124.0	30 kg HRC GIC, 60 kg HRC GIC	100 - 127
ED	97.0 - 124.0	HRC GIC	100 - 127
FE	98.0 - 125.0	HRC GIC, 150 kg (IP69)	101 - 128
GF	130 - 155.7		

c	NP3AS / NYP3AS Option P1 (Hygienic design)		
	Standard	Different at	
CC	84.8 - 90.8		
DC	82.8 - 88.8		
DD	100.3 - 106.3	30 kg HRC GIC, 60 kg HRC GIC	103.3 - 109.3
ED	100.3 - 106.3	HRC GIC	103.3 - 109.3
FE	102.3 - 107.3	HRC GIC, 150 kg (IP69)	105.3 - 110.3
GF	133 - 138		

c	NXP3AS		
	Standard	Different at	
CC	77.5 - 106.5		
DC	77.5 - 104.5	3 kg GIC P, 6 kg HRC GIC P, 15 kg HRC P	80.5 - 107.5
DD	97.0 - 124.0	3 kg GRC GIC P, 6 kg GIC P, 30 kg HRC GIC P, 60 kg HRC GIC P	100 - 127
ED	97.0 - 124.0	HRC GIC P	100 - 127
FE	98.0 - 125.0	HRC GIC P	101 - 128
GF	130 - 155.7		

c	NP3AS / NYP3AS Option P1 (Hygienic design)		
	Standard	Different at	
CC	84.8 - 90.8		
DC	82.8 - 88.8		
DD	100.3 - 106.3	3 kg GRC GIC P, 6 kg GIC P, 30 kg HRC GIC P, 60 kg HRC GIC P	103.3 - 109.3
ED	100.3 - 106.3	HRC GIC P	103.3 - 109.3
FE	102.3 - 107.3	HRC GIC P	105.3 - 110.3
GF	133 - 138		

Options

The choice of different options enables the platform to be customised. If the option code is given when ordering, the platform will be delivered with the desired features. (It is not possible to retrofit the options by ordering the relevant accessories.)

MiNexx® 3000 stainless steel NP3AS/NYP3AS	
Description	Order code
Load plate - stainless steel electro polished [AISI316/1.4404]	N5
Weighing platform - stainless steel electro polished [AISI316/1.4404]	N9
Protection class IP69K	PI69
Hygienic version	P1
Certificate surface roughness	K2
Test report	K3
Factorycertificate	K5
NSF Certificate (only available with option P1)	K6

MiNexx® 3000 painted NP3AP/NYP3AP	
Description	Order code
Higher platform construction for CC/DC (in conjunction with indicator holder)	O1
Certificate test report	K3
Factorycertificate	K5

Typical Values

MiNexx® 3000 weighing platforms				
	Weighing platform	Typical values		
		Standard deviation	Display error at half load	Display error at full load
1.5 kg*	K	0.05 g	0.15 g	0.25 g
	L	0.025 g	0.075 g	0.125 g
	P	0.015 g	0.045 g	0.075 g
	FC / GRC / HRC / GIC	0.025 g	0.075 g	0.125 g
	JC	0.0125 g	0.0375 g	0.0625 g
3 kg	K	0.05 g	0.15 g	0.25 g
	L	0.025 g	0.075 g	0.125 g
	P	0.015 g	0.045 g	0.075 g
	FC / GRC / HRC / GIC	0.025 g	0.075 g	0.125 g
	JC	0.0125 g	0.0375 g	0.0625 g
6 kg	K	0.25 g	0.75 g	1.25 g
	L	0.1 g	0.3 g	0.5 g
	P	0.075 g	0.225 g	0.375 g
	FC / GRC / HRC / GIC	0.1 g	0.3 g	0.5 g
	JC	0.05 g	0.15 g	0.25 g
15 kg**	K	0.5 g	1.5 g	2.5 g
	L	0.25 g	0.75 g	1.25 g
	P	0.15 g	0.45 g	0.75 g
	FC / GRC / HRC / GIC	0.25 g	0.75 g	1.25 g
	JC	0.125 g	0.375 g	0.625 g
30 kg	K	1 g	3 g	5 g
	L	0.5 g	1.5 g	2.5 g
	P	0.375 g	1.125 g	1.875 g
	FC / GRC / HRC / GIC	0.5 g	1.5 g	2.5 g
	JC	0.25 g	0.75 g	1.25 g
60 kg	K	1.25 g	7.5 g	12.5 g
	L	1 g	3 g	5 g
	P	0.75 g	2.25 g	3.75 g
	FC / GRC / HRC / GIC	1 g	3 g	5 g
	JC	0.5 g	1.5 g	2.5 g
150 kg***	K	5 g	15 g	25 g
	L	2.5 g	7.5 g	12.5 g
	P	1.5 g	4.5 g	7.5 g
	FC / GRC / HRC / GIC	2.5 g	7.5 g	12.5 g
	JC	1.25 g	3.75 g	6.25 g
300 kg	K	10 g	30 g	50 g
	L	5 g	15 g	25 g
	P	3.75 g	11.25 g	18.75 g
	FC / GRC / HRC / GIC	5 g	15 g	25 g
	JC	2.5 g	7.5 g	12.5 g

Typical values are determined under optimal production conditions and apply to the statistical average value of all tested appliances.

Typical values are shown for

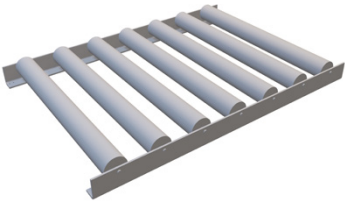
- Standard deviation
- Display error at half load
- Display error at full load


* In the JC variant 1,2 kg

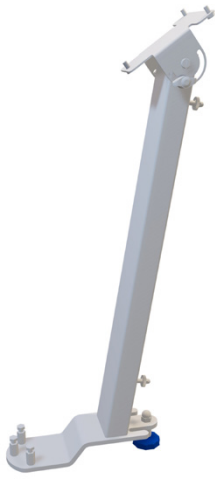
** In the JC variant 12 kg

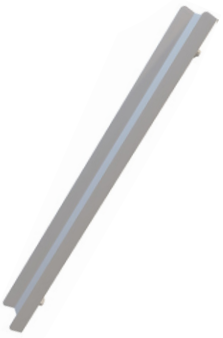
*** In the JC variant 120 kg


Accessories


Roller conveyor				
	Material	For following Platform Sizes:		Order code
		Dimensions: (mm x mm)	Code	
	Stainless steel 1.4301 / AISI304	400 x 300	ED	ARC01-SED
		500 x 400	FE	ARC01-SFE
		650 x 500	GF	ARC01-SGF


Trestle					
	Material	For following Platform Sizes:		Length x Width x Height (in mm)	Order code
		Dimensions: (mm x mm)	Code		
	Galvanized steel	400 x 300	ED	382 x 278 x 619-703	ATP01-P
		500 x 400	FE	482 x 378 x 619-703	ATP02-P
		650 x 500	GF	607 x 448 x 619-703	ATP03-P
	Stainless steel 1.4301 / AISI304	400 x 300	ED	382 x 278 x 619-703	ATP01-S
		500 x 400	FE	482 x 378 x 619-703	ATP02-S
		650 x 500	GF	607 x 448 x 619-703	ATP03-S

Column							
	Material	For following Platform Sizes:		Height (in mm)	Order code		
		Dimensions: (mm x mm)	Code				
	Stainless steel 1.4301 / AISI304	320 x 240	DC	330	ACB01-S		
		300 x 300	DD				
		400 x 300	ED				
		500 x 400	FE	500	ACB02-S		
		650 x 500	GF				
		500 x 400	FE			750	ACB03-S
		650 x 500	GF				

Column cable cover		Necessary for hygienic option!	
	Material	Order number of chosen Bench	Order number of cable cover
	Stainless steel 1.4301 / AISI304	ACB01-S	ACB11-S
		ACB02-S	ACB22-S
		ACB03-S	ACB33-S

Accessory			
	Material	Name	Order code
	Stainless steel 1.4301 / AISI304	Set of wheels	AWT01-S

Adapter Plate		Necessary when attaching a Combics indicator to any columns!	
	Material	Order number of column	Order number of cable cover
	Stainless steel 1.4301 / AISI304	ACB01-S	ACM01-S
		ACB02-S	
		ACB03-S	

Hanger		Platforms which are not listed, are not available for hanging weighing!			
	Material	For following Versions		IP Grade	Order code
		Version	Dimension		
	Stainless steel 1.4301 / AISI304	NP3AP	≤ FE	all	AUF01
		NYP3AP	≤ FE	all	
		NP3AS	≤ ED	IP67	
		NP3AS*	≤ ED	IP69	
		NYP3AS	≤ ED	IP67	

* not possible in resolution HRC & GRC

Ordering information

MiNexx® 3000 order code alignment

Series		Material			Capacity		Size		Resolution	
3000	3A	Stainless steel	S	-	1.5 kg	1.5	200 x 200	CC	15,000d	K
		Painted	P	-	3 kg	3	300 x 300	DD	30,000d	L
					.				60,000d	P
					.				3,000e	FC
					150kg	150	500 x 400	FE	6,000e	JC
					300kg	300	650 x 500	GF	2x3,000e, Multi Range	GRC
									2x3,000e, Multi Interval	GIC
									3x3,000e, Multi Range	HRC

The products and solutions presented in this data sheet make major contributions in the following sectors:



The technical data given serves as a product description only and should not be understood as guaranteed properties in the legal sense.

Specifications subject to change without notice
Rev. 01/2024

Minebea Intec Bovenden GmbH & Co. KG
Leinetal 2
37120 Bovenden, Germany
Phone +49.551.309.83.0
sales.industry@minebea-intec.com
www.minebea-intec.com